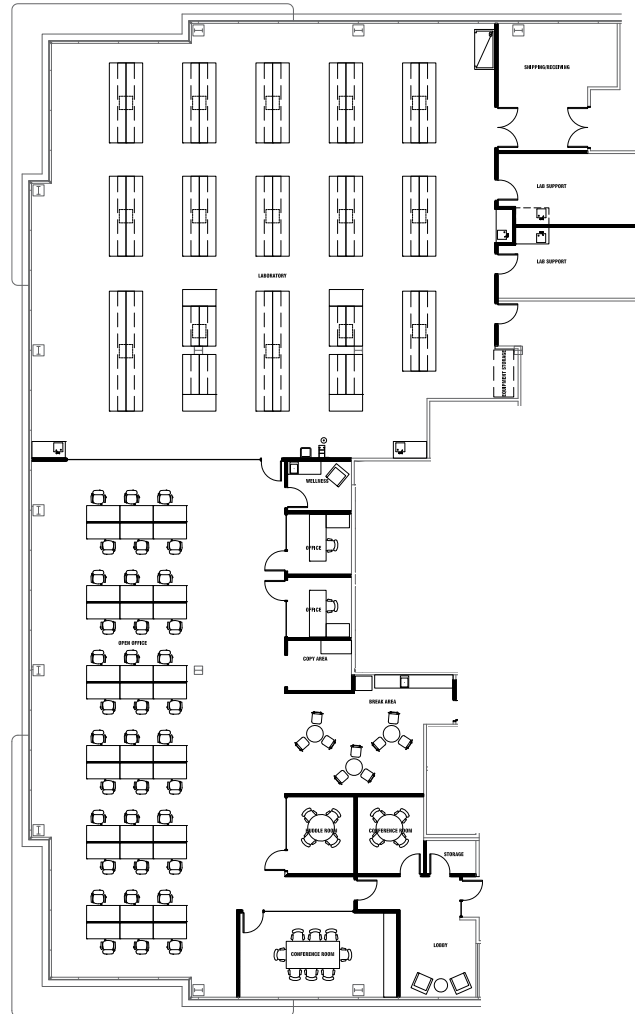
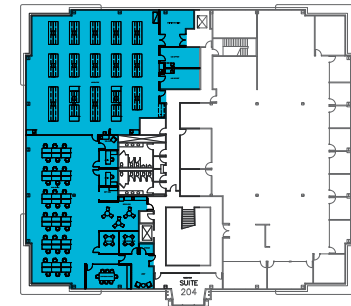


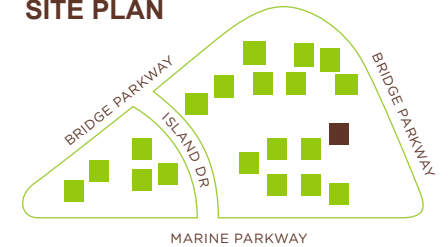
SUITE 201 - ±12,029 SF
 Fitted Lab - Available Now



KEY PLAN



SITE PLAN



BEN PAUL
 Vice Chairman
 +1 650 401 2123
 ben.paul@cushwake.com
 LIC #01210872

MARC POPE
 Vice Chairman
 +1 650 401 2131
 marc.pope@cushwake.com
 LIC #01474483

NICK WALDSMITH
 Director
 +1 650 320 0244
 nick.waldsmith@cushwake.com
 LIC #02148008