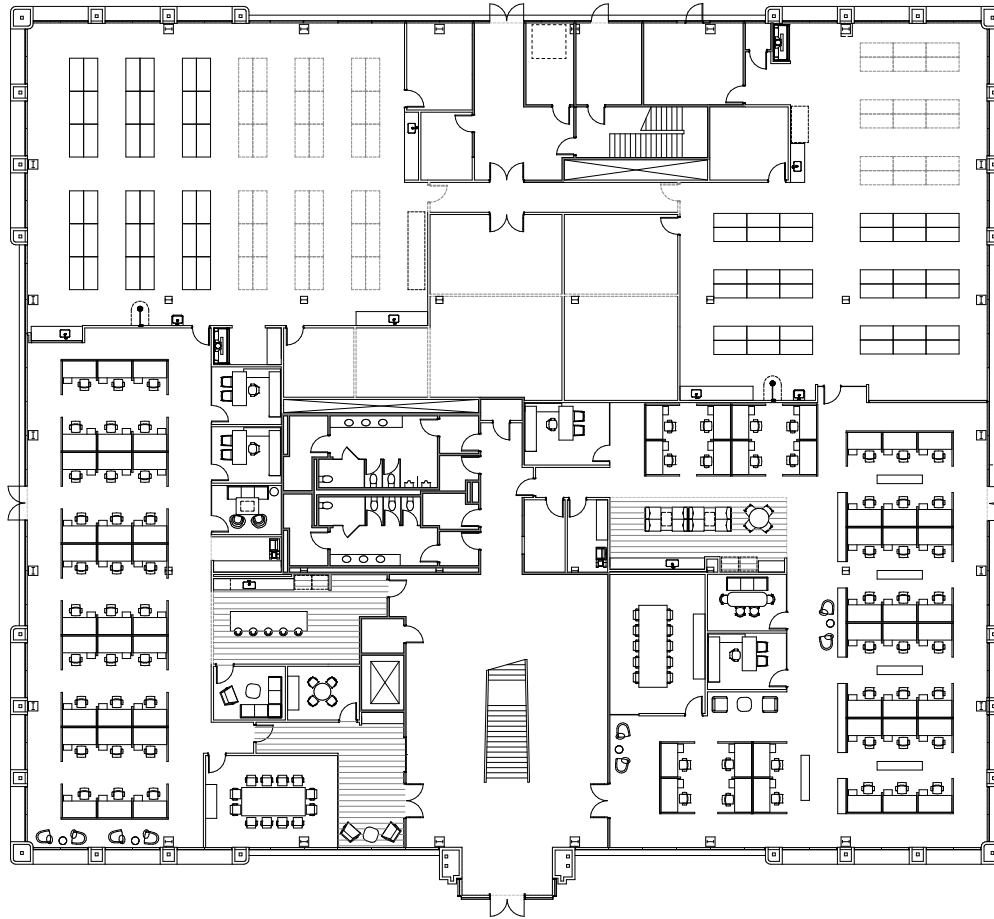
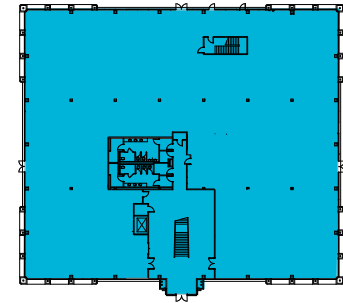


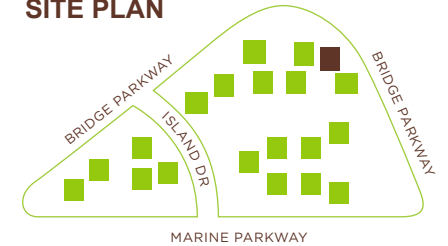
1<sup>st</sup> Floor - ±26,000 SF  
Hypothetical Fitted Lab Floor Plan - Available Now



KEY PLAN



SITE PLAN



**BEN PAUL**  
Vice Chairman  
+1 650 401 2123  
ben.paul@cushwake.com  
LIC #01210872

**MARC POPE**  
Vice Chairman  
+1 650 401 2131  
marc.pope@cushwake.com  
LIC #01474483

**NICK WALDSMITH**  
Director  
+1 650 320 0244  
nick.waldsmith@cushwake.com  
LIC #02148008