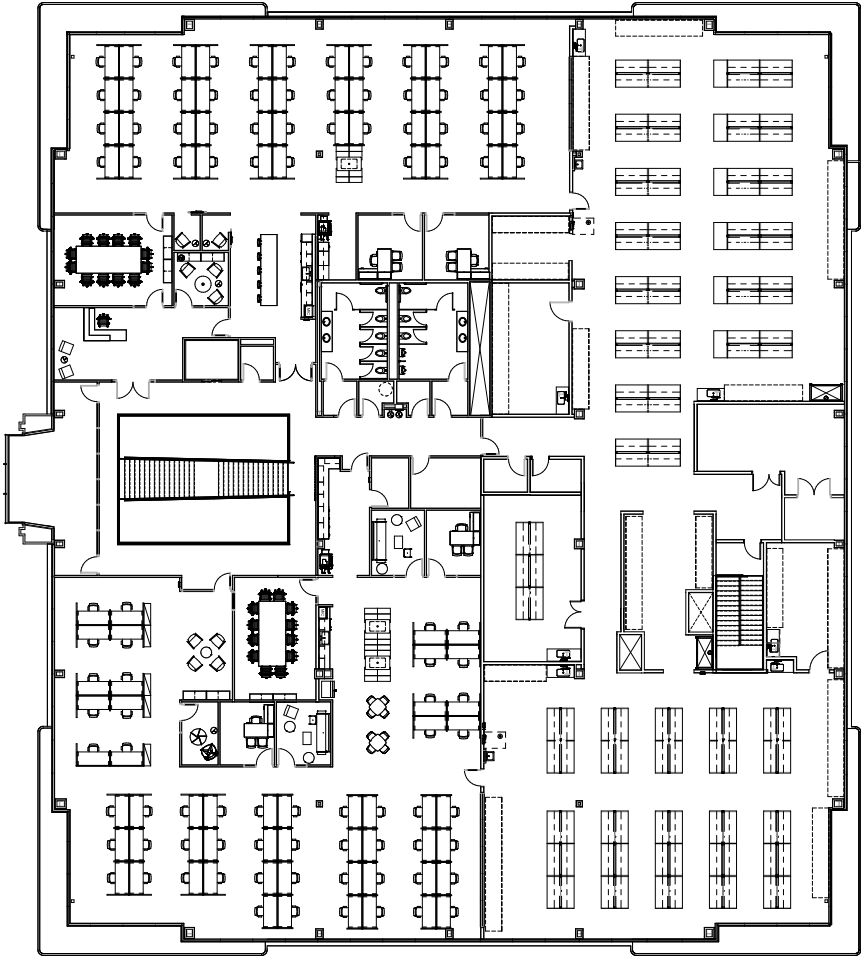
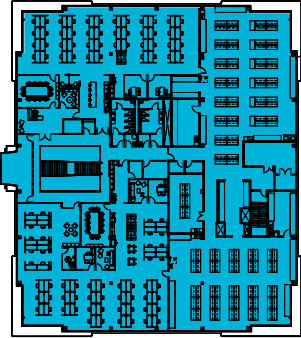


FULL FLOOR SPEC LAB - MOVE IN READY

2<sup>ND</sup> FLOOR - ±25,650 SF



KEY PLAN



SITE PLAN



For more Information, please contact:

**BEN PAUL**  
+1 650 401 2123  
ben.paul@cushwake.com  
LIC #01210872

**MARC POPE**  
+1 650 401 2131  
marc.pope@cushwake.com  
LIC #01474483

**NICK WALDSMITH**  
+1 650 320 0244  
nick.waldsmith@cushwake.com  
LIC #02148008

