



**AN AMENITY
BUILDING
DEDICATED
TO YOU.**

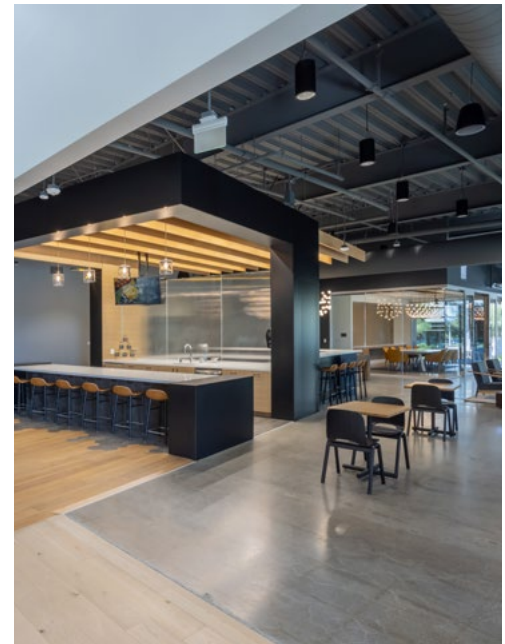


REDWOOD Lab and
Innovation
Focused
Environment
LIFE
WWW.REDWOOD-LIFE.COM

**TWENTY
BUILDINGS
AND MORE
THAN
1 MILLION S.F.**



**LIFE WORKS
HERE.**



Cushman & Wakefield Copyright 2023. No warranty or representation, express or implied, is made to the accuracy or completeness of the information contained herein, and same is submitted subject to errors, omissions, change of price, rental or other conditions, withdrawal without notice, and to any special listing conditions imposed by the property owner(s). As applicable, we make no representation as to the condition of the property (or properties) in question.



LIFE WORKS HERE.

The energy of a breakthrough.
The buzz of collaboration.
Enviably comforts
that benefit work and life,
inspiring days
alive with activity.



±1,000,000 SF

Class A
Life Science Park
with a World Class
Amenity Center



**RANGE
OF LAB SPACE**

Flexible
Layout



BAY TRAIL

Direct access to
Bay Areas Premier
Walking and
Cycling Path



ACCESS

Direct Onsite Shuttle
to Baby Bullet
& Caltrain



REDWOOD LIFE

PROJECT AERIAL

TWENTY BUILDINGS AND MORE THAN 1 MILLION S.F.

of lab and innovation space at the center of San Francisco's central Bay Area. The location is prolific. The footprint is giant. Redwood LIFE totally works.



900 ISLAND DRIVE

AVAILABLE	SIZE	NOTES
SUITE 204	±5,143 SF	Build to Occupy, Ready for Improvements

1300 ISLAND DRIVE

AVAILABLE	SIZE	NOTES
SUITE 105	±4,575 SF	100% Office Suite Opportunity Located in the Amenities Building

1400 BRIDGE PARKWAY

AVAILABLE	SIZE	NOTES
SUITE 102	±12,169 SF	NEW SPEC LAB SUITE Rare Opportunity. 50% Lab and 50% Office. 

2800 BRIDGE PARKWAY **FULL BUILDING OPPORTUNITY**

AVAILABLE	SIZE	NOTES
1ST FLOOR	±27,322 SF	Floor Vacant and Ready for Customized Tenant Improvements
2ND FLOOR	±25,982 SF	Floor Vacant and Ready for Customized Tenant Improvements

3200 BRIDGE PARKWAY

AVAILABLE	SIZE	NOTES
SUITE 201	±12,029 SF	NEW SPEC LAB SUITE - AVAILABLE Q4 2023 Rare Opportunity. 50% Lab and 50% Office. 

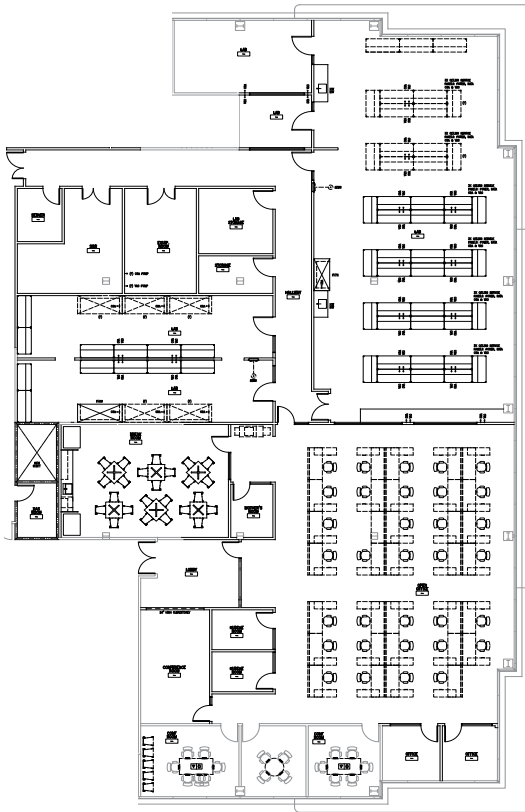
3400 BRIDGE PARKWAY

AVAILABLE	SIZE	NOTES
SUITE 102	±13,242 SF	Build to Occupy, Ready for Improvements

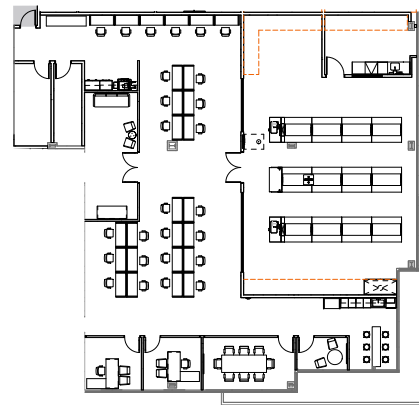
3600 BRIDGE PARKWAY **FULL BUILDING OPPORTUNITY**

AVAILABLE	SIZE	NOTES
SUITE 101	±12,783 SF	NEW SPEC LAB SUITE - AVAILABLE Q4 2023 Rare Opportunity. 50% Lab and 50% Office. 
SUITE 102	±13,389 SF	NEW SPEC LAB SUITE - AVAILABLE Q4 2023 Rare Opportunity. 50% Lab and 50% Office. 
2ND FLOOR	±25,650 SF	FULL FLOOR SPEC LAB - AVAILABLE Q4 2023 Rare Opportunity. 50% Lab and 50% Office. 

This is an environment focused on lab and innovation space where world-changing interactions and favorable reactions are part of every day. This is where work comes to life. This is Redwood LIFE.



HYPOTHETICAL SPEC LAB BUILD OUT - ±13,000 SF



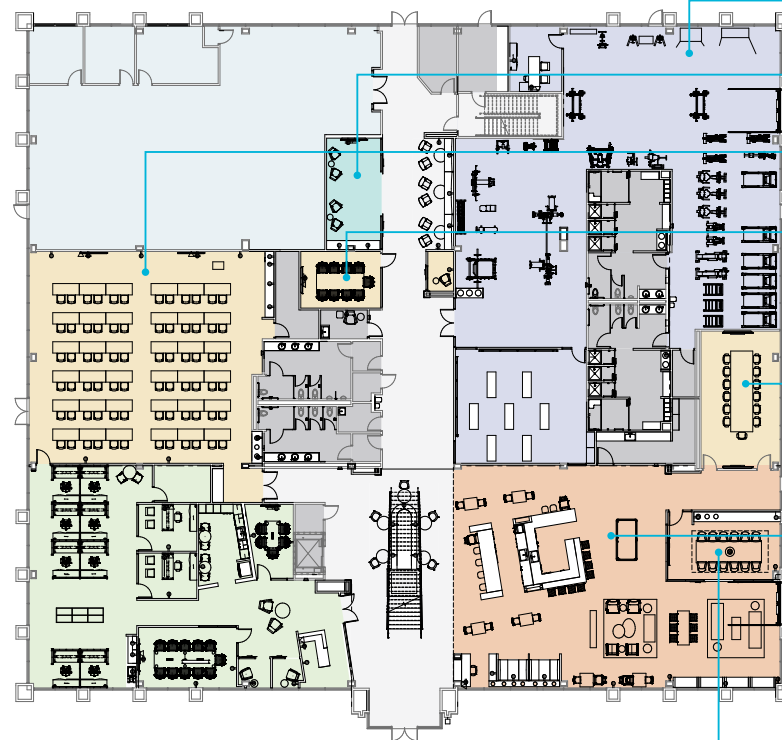
HYPOTHETICAL SPEC LAB BUILD OUT - ±6,500 SF



AN AMENITY BUILDING DEDICATED TO YOU.

Redwood LIFE supports growing companies by providing the lifestyle amenities that attract and retain top talent, in a highly-accessible Mid-Peninsula location.

AMENITY BUILDING - 1300 ISLAND DRIVE

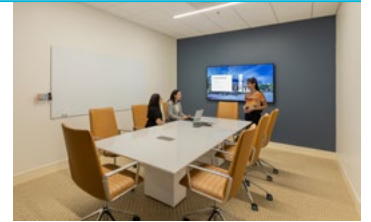


FITNESS CENTER

MARKETING SUITE

TRAINING HALL

CONFERENCE ROOMS



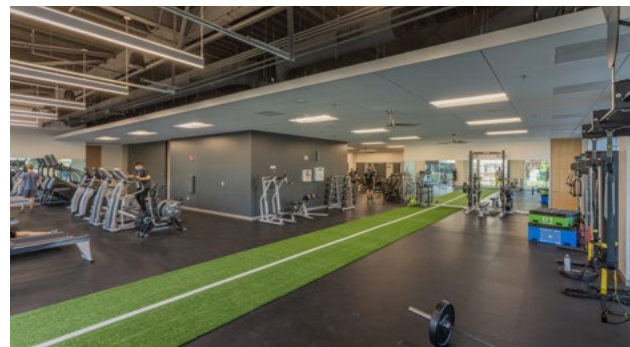
TENANT LOUNGE / MEETING AREAS



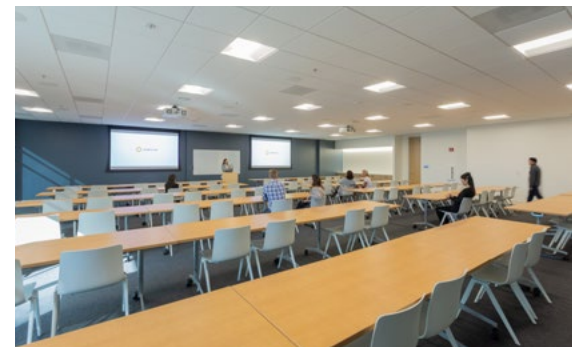
EXECUTIVE DINING ROOM



LOBBY

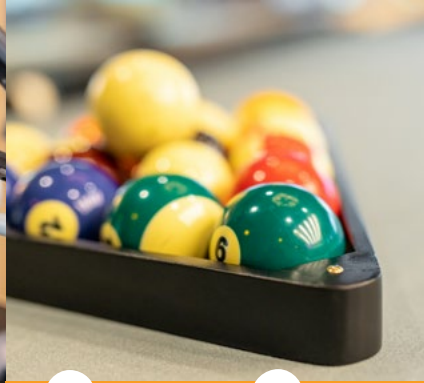


FITNESS CENTER



TRAINING HALL

it's
not what we do



it's
not how we do it



it's
who we are

ELEVATE

No two Longfellow properties are the same, and that's just the way we like it. ELEVATE by Longfellow is not one-size-fits-all — it's one-size-fits-you. With collaborative spaces and bold interiors, ELEVATE brings you the amenities designed to spark camaraderie and enjoyment for your team.

Your ELEVATE on-site curated amenities include:

ELEVATE BALANCE

- Fitness Center
- Programmed Exercise Classes
- Locker Rooms
- Wellness Events
- Wellness Challenges
- Outdoor Fitness Area

ELEVATE CONNECTIONS

- Tenant Engagement Events
- Networking Events
- Happy Hours
- Tenant Contests & Giveaways

ELEVATE TASTE

- Food Trucks
- Pop-up Markets
- Beer, Wine, & Food Tastings

ELEVATE PLAY

- Outdoor Amenity Space

ELEVATE GENEROSITY

- Philanthropic Drives & Donations
- Volunteer Opportunities
- E-Waste & Zero Waste Recycling

ELEVATE BRAINPOWER

- Indoor & Outdoor Meeting Space
- Lunch & Learns
- TED Talks

REDWOOD LIFE

LOCATION

With a central Bay Area location that's simultaneously in the middle of everything and miles from mundane, convenient amenities blend with natural serenity to create a campus where ideas flourish and companies have room to grow.



8 minute dedicated baby bullet shuttle from Hillsdale Station to Redwood LIFE

- SAN FRANCISCO STATION
34 MINUTES*
- SOUTH SAN FRANCISCO STATION
18 MINUTES*
- MILLBRAE STATION
14 MINUTES*
- HILLSDALE STATION | **REDWOOD LIFE**
- REDWOOD CITY STATION
6 MINUTES*
- PALO ALTO STATION
16 MINUTES*
- SAN JOSE STATION
45 MINUTES*

*To Hillsdale Station



HIGHWAY ACCESS

- 101 - 5 MINUTES | 1.4 MILES
- 92 - 7 MINUTES | 3.6 MILES
- 280 - 12 MINUTES | 8.3 MILES
- 84 - 16 MINUTES | 10 MILES

14.5 MILLION SF NATIONAL PORTFOLIO

- Boston, MA
- Durham, NC
- New York, NY
- RTP, NC
- San Diego, CA
- United Kingdom
- Emeryville, CA
- Millbrae, CA
- Palo Alto, CA
- Redwood City, CA
- San Francisco, CA
- San Mateo, CA

Redwood LIFE is brought to you by Longfellow, deliverer of world-class real estate spaces with an emphasis on the sciences. We believe in the power of the work environment to nurture and grow both companies and people. Redwood LIFE is an epic development and the opportunity of a work/lifetime. Let us build to suit you.



DEVELOPMENT

- Strategy & Partnerships
- Advisory & Entitlements
- Acquisitions

MANAGEMENT

- Leasing
- Project Management
- Property Management

INVESTMENTS

- Asset Management
- Investment Management

REDWOOD LIFE

Lab and
Innovation
Focused
Environment

WWW.REDWOOD-LIFE.COM

Address:

900-1300 Island Drive
800-3800 Bridge Parkway
Redwood City, California 94065

For Leasing Information:

BEN PAUL
Vice Chairman
+1 650 401 2123
ben.paul@cushwake.com
LIC #01210872

MARC POPE
Executive Managing Director
+1 650 401 2131
marc.pope@cushwake.com
LIC #01474483

MIKE MORAN
Vice Chairman
+1 650 494 5154
mike.moran@cbre.com
LIC #00901003

CHARLIE MORAN
Vice President
+1 650 494 5152
charlie.moran@cbre.com
LIC #02102431

REDWOODLIFE-INFO@CUSHWAKE.COM