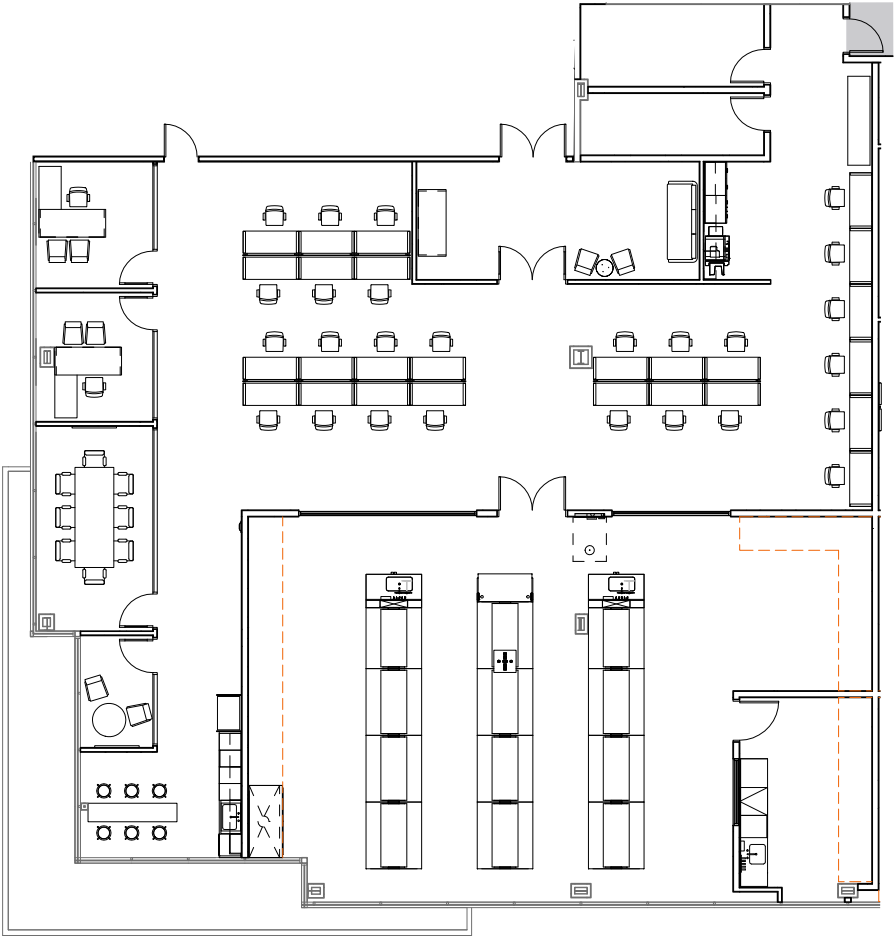
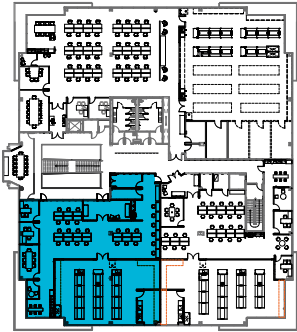


SPEC LAB SUITE - AVAILABLE Q1 2023

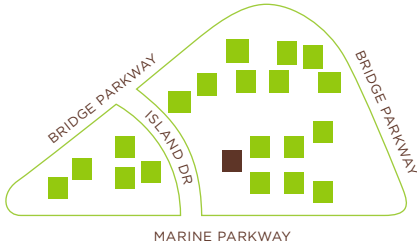
SUITE 203 - ±6,685 SF



KEY PLAN



SITE PLAN



For more Information, please contact:

BEN PAUL
+1 650 401 2123
ben.paul@cushwake.com
LIC #01210872

MARC POPE
+1 650 401 2131
marc.pope@cushwake.com
LIC #01474483

MIKE MORAN
+1 650 494 5154
mike.moran@cbre.com
LIC #00901003

CHARLIE MORAN
+1 650 494 5152
charlie.moran@cbre.com
LIC #02102431

