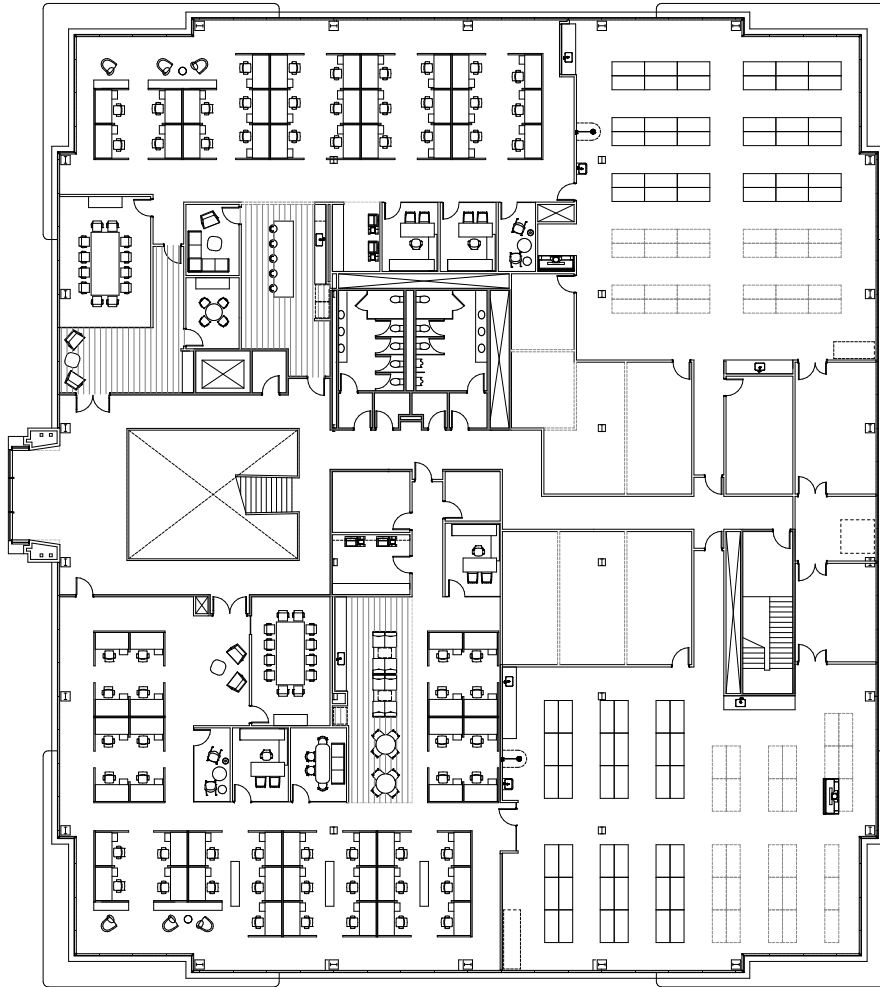
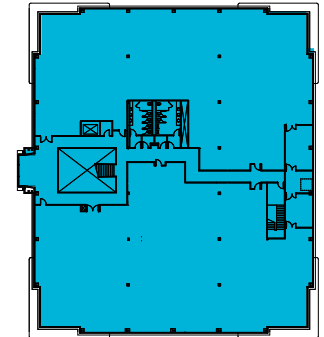


FULL FLOOR SPEC LAB - OCTOBER 2021 MOVE IN READY

2<sup>ND</sup> FLOOR - ±26,060 SF



KEY PLAN



SITE PLAN



## HYPOTHETICAL FLOORPLAN

For more Information, please contact:

**BEN PAUL**  
+1 650 401 2123  
ben.paul@cushwake.com  
LIC #01210872

**MARC POPE**  
+1 650 401 2131  
marc.pope@cushwake.com  
LIC #01474483

**MIKE MORAN**  
+1 650 245 2446  
mike.moran@cbre.com  
LIC #00901003

**CHARLIE MORAN**  
+1 650 288 8605  
charlie.moran@cbre.com  
LIC #02102431

