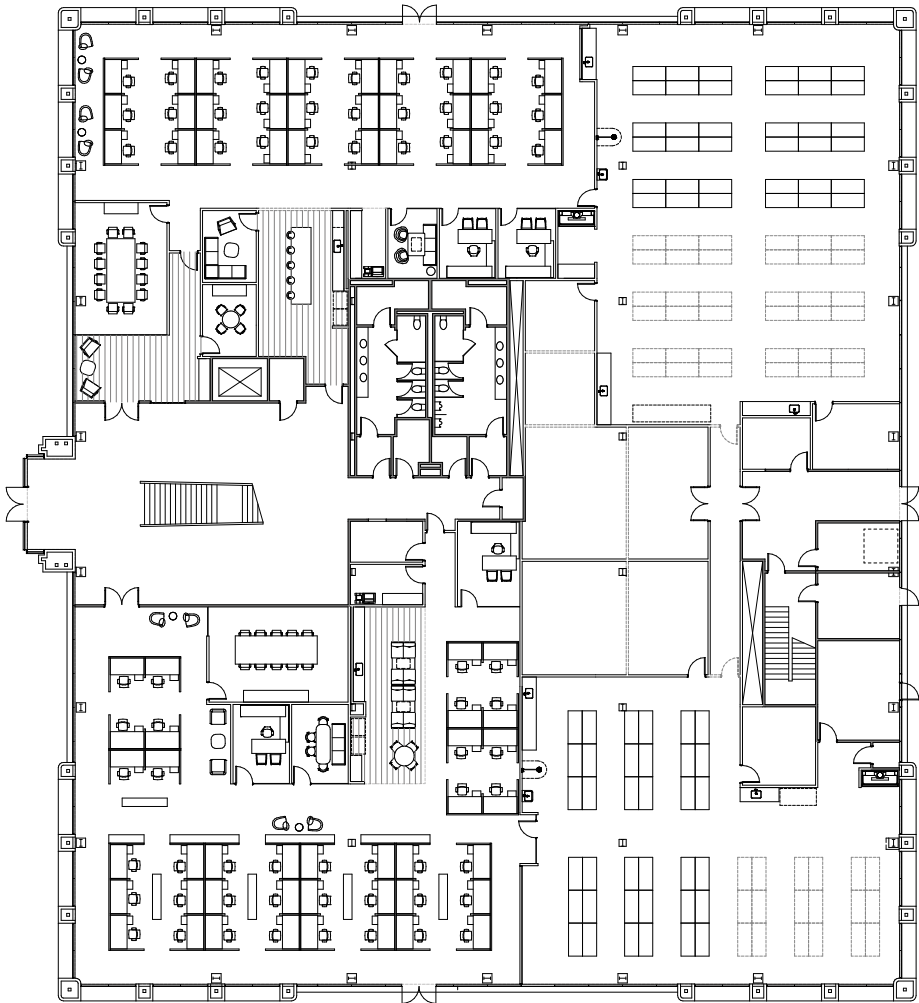
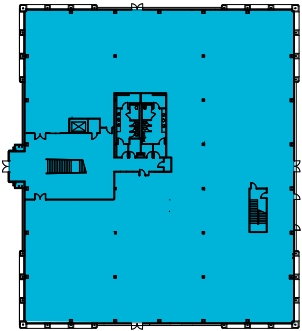


FULL FLOOR SPEC LAB - SEPTEMBER 2021 MOVE IN READY

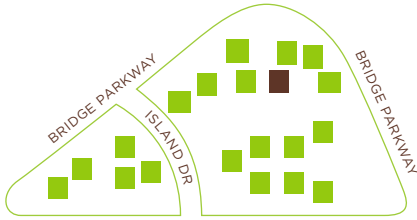
1ST FLOOR - ±25,761 SF



KEY PLAN



SITE PLAN



HYPOTHETICAL FLOORPLAN

For more Information, please contact:

MIKE MORAN
+1 650 401 2121
mike.moran@cushwake.com
LIC #00901003

BEN PAUL
+1 650 401 2123
ben.paul@cushwake.com
LIC #01210872

MARC POPE
+1 650 401 2131
marc.pope@cushwake.com
LIC #01474483

CHARLIE MORAN
+1 650 288 8605
charlie.moran@cushwake.com
LIC #02102431

